



2004-05 Roster

Numerical

NONAME	POS	HT	EXP	YR	HOMETOWN (HIGH SCHOOL/JUNIOR COLLEGE)
1 Jordan McCormick	G	5-10	HS	FR	El Cerrito, Calif. (El Cerrito HS)
3 Jessica Perry	G	5-6	3V	SR	Phoenix, Ariz. (Shadow Mountain HS)
4 Ariana Scales	G	5-8	TR	JR	Topeka, Kan. (Topeka W. HS/ Cowley County CC)
5 Nikki Stratton*	G	5-11	1V	SO	Colorado Springs, Colo. (Coronado HS)
10 Stephanie Singer	G	5-7	1V	SO	Eugene, Ore. (Marist HS)
11 Crystal Blue	G	5-10	TR	JR	Seattle, Wash.(Franklin HS/Odessa College)
15 Emma Joneby	F	6-2	3V	SR	Vasteras, Sweden (Sanda School)
22 Dani Montgomery	G	5-11	HS	FR	Medford, Ore. (Crater HS)
23 Charmaine Jones	G	5-6	2V	JR	Los Angeles, Calif. (Rolling Hills Prep)
24 Adriane Ferguson	G	6-0	1V	SO	Spokane, Wash. (Mead HS)
32 Kate Benz	F	6-2	1V	SO	Portland, Ore. (Central Catholic HS)
41 Keisha Moore	C	6-2	TR	JR	Riverside, Calif. (J.W. North HS/Idaho)

* will redshirt 2004-05 season

HEAD COACH: Sherri Murrell (Merl) (Pepperdine, 1991) 3rd Year.

ASSISTANT COACHES: Mark Lewis (Southern Mississippi, 1982) 3rd Year; Lisa Fisher (Boise State, 1995) 3rd Year; Christopher Holland (Arizona State, 2000) 3rd Year.

DIRECTOR OF BASKETBALL OPERATIONS: Sarah Holland (Dayton, 2003) 2nd Year.

Pronunciation guide

Sherri Murrell

[Merl]

Emma Joneby

[Yoan-a-bee]

Charmaine Jones

[Shar-main]

Ariana Scales

[Ar-e-on-ah]

Dani Montgomery

[Danny]

Keisha Moore

[Key-sha]



The 2004-05 Cougars: Back Row (left to right) - Kate Benz, Emma Joneby, Jordan McCormick, Charmaine Jones, Ariana Scales, Crystal Blue, Nikki Stratton, Dani Montgomery, Keisha Moore, Adriane Ferguson. Front (left to right) - Jessica Perry, Stephanie Singer.



1 • Jordan McCormick
G • 5-10 • FR
El Cerrito, Calif.



3 • Jessica Perry
G • 5-6 • SR
Phoenix, Ariz.



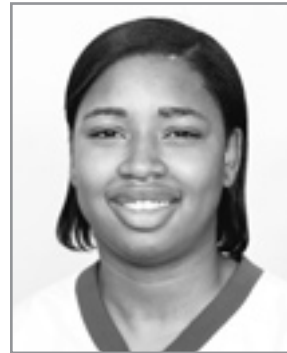
4 • Ariana Scales
G • 5-8 • JR
Topeka, Kan.



5 • Nikki Stratton
G • 5-11 • SO
Colorado Springs, Colo.



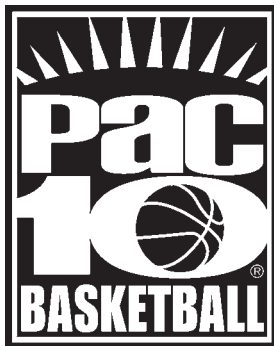
10 • Stephanie Singer
G • 5-7 • SO
Eugene, Ore.



11 • Crystal Blue
G • 5-10 • JR
Seattle, Wash.



15 • Emma Joneby
F • 6-2 • SR
Vasteras, Sweden



22 • Dani Montgomery
G • 5-11 • FR
Medford, Ore.



23 • Charmaine Jones
G • 5-6 • JR
Los Angeles, Calif.



24 • Adriane Ferguson
G • 6-0 • SO
Spokane, Wash.



32 • Kate Benz
F • 6-2 • SO
Portland, Ore.



41 • Keisha Moore
C • 6-2 • JR
Riverside, Calif.



Sherri Murrell
Head Coach

www.wsucougars.com

15 - EMMA JONEBY



Forward

6-2

Senior

Vasteras, Sweden

(Sanda School)

JONEBY'S WSU CAREER

JUNIOR (2003-04): Played in 25 games, starting one...averaged .8 points and 1.1 rebounds a game...recorded season highs in points (five) in the season-opening win over Fresno State (Nov. 21)...pulled down a season-high six rebounds at Idaho (Dec. 20)...All-Pac-10 academic honorable mention selection.

JONEBY'S WSU CAREER HIGHS

MIN: 26 (twice) at Montana State, 11/25/02*
FGM: 6 (Twice) at Arizona, 2/8/03*
FGA: 12 at Montana State, 11/25/02
3FGM: 1 (Twice) at Idaho, 12/5/01*
3FGA: 1 (4 Times) at Montana State, 11/25/02*
FTM: 4 at BYU, 11/24/01
FTA: 6 (Twice) at Montana State, 11/25/02*
REB: 7 (3 Times) at Stanford, 1/16/03*
ASST: 2 (4 Times) at Oregon 2/12/04*
BLKS: 2 (3 Times) at Gonzaga 12/11/02*
STLS: 5 vs. Fresno State, 11/21/03
PTS: 12 (4 Times) at Arizona, 2/8/03*

*indicates most recent occurrence

SOPHOMORE (2002-03): Played in all 28 games, starting 10...averaged 3.5 points and 2.6 rebounds a game...shot 44-of-99 (44 percent) from the field...turned in a career-high 12 points three times (at Montana State, Nov. 25; vs. Washington, Dec. 28; at Arizona, Feb. 8)...grabbed a career-high seven rebounds twice at No. 6 Stanford (Jan. 16) and against Oregon State (Jan. 23)...All-Pac-10 academic honorable mention selection.

FRESHMAN (2001-02): Saw action in 27 games, starting seven...averaged 13.8 minutes, 2.9 points and 2.7 rebounds per game...scored a season-high 12 points on 4-of-6 shooting at BYU (Nov. 24)...followed that up with a nine-point effort versus Portland State (Nov. 26)...scored five or more points on four other occasions...grabbed a season-high seven rebounds versus Stanford (Jan. 17).

JONEBY'S HIGH SCHOOL CAREER

As a **FRESHMAN** was a member of team that captured Swedish Under 20 Championship...averaged 14 points and nine rebounds a game as a **SOPHOMORE** at Sanda School playing for coach Johan Enbom...earned most improved player award and was a member of the All-Star team at the Adidas

Eurocamp in Berlin...As a **JUNIOR** averaged 17 points and 11 rebounds a game...exploded for a 24 point and 16.7 rebound average in her **SENIOR** season... earned the 2001 MVP award at the Under 20 Championships in Sweden... scored 35 and 37 points in two playoff games leading her team to a third place finish in Sweden... Joneby was a member of the Swedish Junior National Team for four years and played in over 40 international games.

PERSONAL

Emma Cecilia Joneby...born 2-4-82 at Vasteras, Sweden...parents Marten and Ulla Joneby... sister Anna and brother Magnus...majoring in communication.



Emma Joneby pauses at the walkway of the Holland Library Plaza. Views from the walkway include the picturesque rolling hills of the Palouse to the north, the forested green landscape of Idaho's Moscow Mountain to the east and the city of Pullman to the west.

JONEBY YEAR BY YEAR

YEAR	GP-GS	PTS-AVG	FGM-FGA	PCT	3-PT FG FGM-FGA	PCT	FTM-FTA	PCT	OR	DR	TR	AVG	PF	A	TO	BS	ST	MIN
2002	27-7	78-2.9	30-98	.306	2-3	.667	16-30	.533	34	39	73	2.7	45	12	21	10	10	373
2003	28-10	99-3.5	44-99	.444	0-1	.000	11-33	.333	26	47	73	2.6	41	12	40	11	12	402
2004	25-1	21-0.8	8-32	.250	0-0	.000	5-9	.556	10	17	27	1.1	15	7	15	3	7	196
Career	80-18	198-2.5	82-229	.358	2-4	.500	32-72	.444	70	103	173	3.1	101	31	76	24	29	971

"Every team needs to have a teammate like Emma. Emma has your back in any given situation and always puts her teammates before herself. She is a team player who will always be there for you."

-Adriane Ferguson

"Emma is a driving force. She works the hardest and has a strong voice on the team."

—Stephanie Singer

"Emma has the sweetest hook shot. I always try to duplicate it but it's a Swedish original."

—Kate Benz

"Since Emma and I came in together as freshmen, we have grown a lot as teammates and friends. I couldn't have asked for someone with a better sense of humor, style and drive."

—Jessica Perry

A Joneby Memory

"One memory from Italy was when Emma bought some shoes and her whole smile lit up all of Florence. It was good to see

Emma so happy."

—Charmaine Jones



3 - JESSICA PERRY



Guard
5-6
Senior
Phoenix, Ariz.
(Shadow Mountain HS)

(UCLA, Feb. 7; UW, Feb. 21)...243 career assists is No. 10 on the school's all-time list in that category.

SOPHOMORE (2002-03): Started 25 of 26 games...saw action an average of 30.2 minutes a game, which was second on the team...finished the season ninth in the Pac-10 in assists (3.27/game) and steals (1.92/game)...team's second-leading scorer averaging 9.5 points per game...scored in double-digits in 10 games including five of the last six...recorded three games of 20 points or more including a career-high 25 points at Stanford (Jan. 16)...made a career-high nine field goals against the Cardinal...tied career-mark with nine fields against Idaho (Feb. 27)...posted 20 points against Arizona State (Jan. 11) and Idaho (Feb. 27)...dished out a season-high nine assists twice – at Gonzaga (Dec. 11) and versus Washington (Dec. 28)...established a career-high with nine rebounds at Montana (Dec. 14)...tied a career-high with five steals on three occasions – at Gonzaga (Dec. 11), at Stanford (Jan. 16) and versus Idaho (Feb. 27)...missed the season's first two games with mononucleosis.

FRESHMAN (2001-02): Played in all 29 games, starting 19...averaged 26.6 minutes, 6.8 points and 2.6 rebounds a game...averaged 10.6 points in final five games of season...scored in double figures in five games including a season-high 21-point effort at Oregon in the Pac-10 Tournament (March 1)...converted a season-high seven field goals including a season best three treys against the Ducks...led team with 95 assists...ranked ninth in the conference in assists with a 3.28 per game average...dished out a season-high 10 assists in win over Gonzaga (Nov. 29)...played a season-high 37 minutes versus the Bulldogs...grabbed a season-high six rebounds three times (Gonzaga, Nov. 29; USC, Jan. 4; UCLA, Jan. 6).

PERRY'S HIGH SCHOOL CAREER

Lettered four years in basketball and track at Shadow Mountain High School for coach Ruben Cervantez... completed high school basketball career as Shadow Mountain's all-time leader in points (1,753), steals and assists (325)...earned all-time leader status in those categories after junior season...earned scholar-athlete award as a **FRESHMAN**...was second team all-region as a **SOPHOMORE** and earned team's hustle award...averaged 14 points, 4.7 rebounds, 4.2 assists and 3.2 steals as a **JUNIOR**...earned an all-region and an honorable mention All-State selection...all-tournament first team selection at the Corona Del Sol Holiday Classic and the Flowing Walls Shootout...named the team MVP...selected to the All-Desert Valley Region first team as a **SENIOR**...earned second team All-Arizona... all-tournament first team selection at Corona Holiday Tournament and earned MVP recognition at Tucson Flowing Well Holiday Shootout.

PERSONAL

Jessica C. Perry...born 8-13-82 at Los Angeles, Calif...parents Rosevelt and LeDora Perry... brother Deonte and sister Lauren...majoring in communication and minoring in sports management.



Jessica Perry drinks a latte at the Cyber Café, one of several espresso sites on the WSU campus. The Cyber Café is located in the Smith Center for Undergraduate Education. Named in honor of Sam Smith (WSU President from 1985-2000) the 94,000 square foot building boasts the latest in technology and classroom design to enhance teaching and learning.

PERRY'S WSU CAREER

JUNIOR (2003-04): Played in 27 games, starting 19...averaged 5.8 points a game... scored a season-high 18 points against Stanford (Jan. 2)...reached double figures in points eight times, including six in an eight-game stretch...turned in a 16-point effort at Utah (Dec. 13)...tied a career-high with nine rebounds against UCLA (Feb. 7)...led team in steals (1.5/game) and was second in assists (2.3/game)...season-high five assists twice

PERRY'S WSU CAREER HIGHS

MIN: 37 (Twice) vs. Nebraska, 12/4/03
FGM: 9 (Twice) vs. Idaho, 2/27/03*
FGA: 20 vs. Idaho, 2/27/03
3FGM: 3 (4 Times) at Oregon 2/12/04*
3FGA: 8 vs. Nebraska, 12/4/03
FTM: 8 vs. San Diego State, 12/22/03
FTA: 11 at Stanford, 1/16/03
REB: 9 (3 Times) vs. UCLA 2/7/04*
ASST: 10 vs. Gonzaga, 11/29/01
BLKS: 3 vs. Oregon, 3/1/02
STLS: 5 (5 Times) at EWU, 11/26/03
PTS: 25 at Stanford, 1/16/03

*indicates most recent occurrence

PERRY YEAR BY YEAR

YEAR	GP-GS	PTS-AVG	FGM-FGA	PCT	3-PT FG		FTM-FTA	PCT	OR	DR	TR	AVG	PF	A	TO	BS	ST	MIN
					FGM-FGA	PCT												
2002	29-19	197-6.8	76-273	.278	9-51	.176	36-59	.610	19	57	76	2.6	58	95	126	9	44	772
2003	26-25	247-9.5	92-282	.326	15-56	.268	48-82	.585	14	71	85	3.3	51	85	122	3	50	786
2004	27-19	154-5.7	55-183	.301	14-65	.215	30-39	.769	11	73	84	3.1	44	63	90	5	41	678
Career	82-63	598-7.3	223-738	.302	38-172	.221	114-180	.633	44	201	245	2.9	153	243	338	17	135	2,236



*"JP gets really excited for her teammates,
which is a contagious feeling."*

—Stephanie Singer

*"JP is a feisty defender who can stop the best
offensive players on the other team."*

—Charmaine Jones

*"JP sets the tempo of the game from the very
start. We feed off of her energy
and sweet passes."*

—Nikki Stratton

A Perry Memory

*"One time during Christmas, JP and I took some
cafeteria trays and went sledding. We raced
down the hill and she was trying to be smooth,
but instead wiped out and rolled down the
rest of the hill."*

—Adriane Ferguson



23 - CHARMAINE JONES

Guard

5-6

Junior

Los Angeles, Calif.
(Rolling Hills Prep)

category ...reached double figures in points five times...recorded nine points on five occasions.

FRESHMAN (2002-03): Saw action in 20 games, starting one...averaged 4.0 points and 15.2 minutes a game...scored a season-high 14 points against Oregon State (Jan. 23)...converted a season-high five field goals versus the Beavers...tallied 12 points versus No. 18 Arizona (Jan. 9)...dished out a season-high five assists against California (Feb. 13)...recorded four steals at UCLA (Jan. 5).

JONES' HIGH SCHOOL CAREER

Four year letterwinner in basketball at Rolling Hills Prep for coach Joe Jackson...also attended South Bay Lutheran High School...earned second team All-CIF (California Interscholastic Federation) honors as a **FRESHMAN**...earned athlete of the week accolades by the Daily Breeze newspaper...named first-team All-Express League and first team All-CIF as a **SOPHOMORE**...garnered Express League and CIF first team accolades as a **JUNIOR**...MVP of team that posted a

25-5 record...team reached quarterfinals of CIF Southern Section Regionals...earned St. Anthony's All-Tournament team accolades...earned CIF Division 5A Player of the Year and MVP honors as a **SENIOR**...earned CIF MVP honors for Express League and Division 5A championship squad...first team All-CIF and first team All-Express League...named athlete of the week by Daily Breeze newspaper...averaged 26 points, 6.1 rebounds, 5.7 assists and 4.2 steals per game for team that posted a 22-7 record.

PERSONAL

Charmaine Shante Jones...born 8-14-84 at Harbor City, Calif....mother Hattie...cousin Terry Aldredge played basketball at Cal Poly Pomona...cousin Charles Philyaw played for the Oakland Raiders of the National Football League from 1976-79...plans to pursue a degree in criminal justice.

JONES' WSU CAREER

SOPHOMORE (2003-04): Played in all 28 games, starting one...third on the team with a 6.5 points a game average ...scored a career-high 19 points at Stanford (Jan. 31)...made 6-of-11 field goals against the Cardinal...recorded 11 points against the Cardinal at Pullman (Jan. 2)...tallied 12 points at Oregon State (Feb. 14)...led team from the charity stripe shooting 71-of-91 (.780)...tied for eighth in the Pac-10 in that

JONES' WSU CAREER HIGHS

MIN: 30 at Stanford, 1/31/04
FGM: 6 at Stanford, 1/31/04
FGA: 11 (Twice) at Stanford, 1/31/04*
3FGM: 2 (Twice) vs. Nebraska, 12/4/03*
3FGA: 4 vs. Arizona, 1/9/03
FTM: 7 at Stanford, 1/31/04
FTA: 10 at Stanford, 1/31/04
REB: 5 at Utah, 12/13/03
ASST: 5 (Twice) vs. Utah Valley State, 12/6/03
BLKS: none
STLS: 4 at UCLA, 1/3/03
PTS: 19 at Stanford, 1/31/04

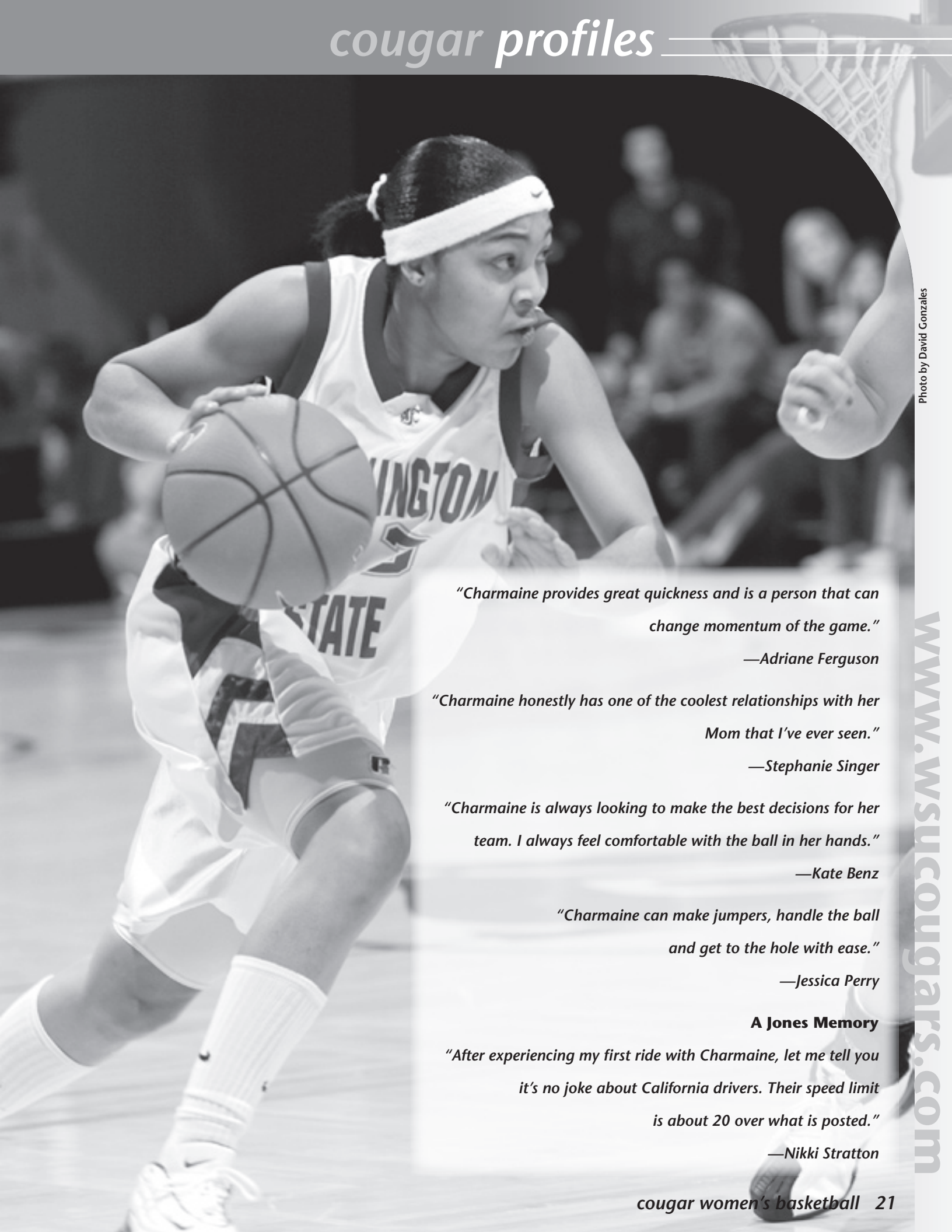
*indicates most recent occurrence



Charmaine Jones relaxes in front of the Holland Library entrance, one of six libraries at Washington State. The University Libraries are an integral part of the WSU educational experience. They house over three million books, journals, newspapers, and other publications along with a vast array of electronic resources that support WSU's commitment to teaching, research and public service.

JONES YEAR BY YEAR

YEAR	GP-GS	PTS-AVG	FGM-FGA	PCT	3-PT FG FGM-FGA	PCT	FTM-FTA	PCT	OR	DR	TR	AVG	PF	A	TO	BS	ST	MIN
2003	20-1	80-4.0	28-94	.298	5-24	.208	19-33	.576	11	22	33	1.7	21	19	66	0	19	304
2004	28-1	182-6.5	51-141	.362	9-28	.321	71-91	.780	14	26	40	1.4	40	25	54	0	19	451
Career	48-2	262-5.5	79-235	.336	14-52	.269	90-124	.726	25	48	73	1.5	61	44	120	0	38	755



"Charmaine provides great quickness and is a person that can change momentum of the game."

—Adriane Ferguson

"Charmaine honestly has one of the coolest relationships with her Mom that I've ever seen."

—Stephanie Singer

"Charmaine is always looking to make the best decisions for her team. I always feel comfortable with the ball in her hands."

—Kate Benz

"Charmaine can make jumpers, handle the ball and get to the hole with ease."

—Jessica Perry

A Jones Memory

"After experiencing my first ride with Charmaine, let me tell you it's no joke about California drivers. Their speed limit is about 20 over what is posted."

—Nikki Stratton



32 - KATE BENZ

Forward

6-2

Sophomore

Portland, Ore.

(Central Catholic HS)

BENZ'S WSU CAREER

FRESHMAN (2003-04): All-Pac-10 freshman honorable mention selection...led team in rebounds (6.7/game) and was second in scoring (8.8 points/game)...sixth in the conference in rebounds...pulled down 19 rebounds against San Diego State (Dec. 22) tying for sixth on the school's all-time list for rebounds in a game...tallied nine offensive and 10 defensive boards before fouling out with 3:15 left...recorded third double-double of the season with 20 points and 10 rebounds against

UCLA (Feb. 8)...marked third double-double in a five-game span...tied for seventh in the Pac-10 in that category...point total against UCLA was a season-high...averaged a double-double of 13 points and 10 rebounds in two games at the Oregon schools (Feb. 12 & 14)...recorded a game-high 17 points and added nine rebounds at Oregon (Feb. 12)...two days later, pulled down a game-high 11 rebounds and chipped in nine points at Oregon State...scored 14 points and pulled down 11 rebounds at Stanford (Jan. 31)...turned in first double-double with 15 points and 10 rebounds against UW (Jan. 24)...in conference games only, averaged 9.5 points a game...ranked among the top 10 in the Pac-10 in four categories: rebounds (sixth), offensive rebounds (2.57/game, sixth), defensive rebounds (4.07/game, 10th) and blocks (.57, 10th)...second on team with 1.3 steals a game.

featuring Oregon and Washington all-stars, where she played against WSU teammate Adriane Ferguson.

PERSONAL

Katelyn Ann Benz...born 3-4-85...parents Tom and Diane...sisters Elizabeth and Stefanie and brother Joseph...editor of high school newspaper...plans to pursue a degree in communication.



Kate Benz enjoys a shake from Ferdinand's, the retail outlet for the WSU Creamery. Ferdinand's menu consists of ice cream products produced in the creamery with milk from WSU's own dairy herd. Ferdinand's also sells the creamery's award winning Cougar Cheese products with Cougar Gold being the most famous. Ferdinand's facility includes an observation room where creamery visitors can watch the cheese making process.

BENZ' WSU CAREER HIGHS

MIN:	37 at Washington, 1/24/04
FGM:	9 at Wyoming, 11/24/03
FGA:	19 vs UCLA, 2/7/04
3FGM:	3 at Oregon, 2/12/04
3FGA:	5 at Oregon, 2/12/04
FTM:	9 vs. Oregon, 1/17/04
FTA:	12 vs. Oregon, 1/17/04
REB:	19 vs. San Diego State, 12/22/03
ASST:	4 vs. Fresno State, 11/21/03
BLKS:	2 (Twice) vs. San Diego State, 12/22/03
STLS:	3 (Twice) at UCLA, 1/11/04*
PTS:	20 vs. UCLA, 2/7/04

*indicates most recent occurrence

BENZ'S HIGH SCHOOL CAREER

Played for Coach Sandy Dickerson at Central Catholic...member of team that posted a 24-2 record as a **SOPHOMORE**...as a **JUNIOR** earned first team All-Mt. Hood Conference...earned Oregonian Player of the Game honors at the State Tournament...team finished fourth at state...second team all-tournament at the Lake Oswego Shootout... averaged 15.9 points and 12.7 rebounds a contest as a **SENIOR**...2002 Wendy's Heisman Award nominee and a 2003 McDonald's All-American nominee...garnered Mt. Hood Conference Player of the Year honors...received first-team All-State accolades... first team All-Mt. Hood Conference selection...selected to the Oregon State All-Tournament First Team...participated in the Northwest Shootout, an annual game

BENZ YEAR BY YEAR

YEAR	GP-GS	PTS-AVG	FGM-FGA	PCT	3-PT FG FGM-FGA	PCT	FTM-FTA	PCT	OR	DR	TR	AVG	PF	A	TO	BS	ST	MIN
2004	28-28	246-8.8	93-218	.427	13-44	.295	47-77	.610	72	115	187	6.7	82	33	55	16	35	773



"Kate is an animal down low and does whatever it takes to get those loose balls."

—Stephanie Singer

"Kate can shoot the three, which puts her post defender in an awkward situation."

—Charmaine Jones

"Kate Benz! Her name says it all. She's nice and stylish!!"

—Jessica Perry

A Benz Memory

"My memory of Kate is when she got her tooth chipped out at Stanford.

It wasn't just some minor chip; Kate was basically missing the whole thing and looked like Lloyd of Dumb and Dumber."

—Adriane Ferguson



24 - ADRIANE FERGUSON

Guard

6-0

Sophomore

Spokane, Wash.

(Mead HS)

(Feb. 12 & 14) recovering from the effects of a concussion.

FERGUSON'S HIGH SCHOOL CAREER

First player from the Greater Spokane League to choose WSU since 1985...four year letterwinner in basketball at Mead High School for Coach Beth Wing... became second freshman to play varsity basketball in school history ...averaged over 20 minutes a game during **FRESHMAN** season for a team that finished at the top of the Greater Spokane League...earned first team All-GSL honors as a **SOPHOMORE** marking only the sixth time that a sophomore earned a first team selection in GSL history...second team All-State 4A Tournament...selected as MVP and best offensive player of team...team's leading rebounder and free throw shooter... as a **JUNIOR** averaged 15.2 points per game, which was third best in the GSL...first team All-GSL... averaged nine rebounds and four blocks a contest...shot 39 percent from three-point territory to lead team...MVP of Idaho-Washington All-Star Game...averaged 15.4 points a game as a **SENIOR**...garnered team MVP honors after averaging 16.9 points and nine rebounds a game...led team to GSL Divisional Championship...earned All-GSL third year in a row...all-area and All-State selection...garnered Seattle Times Class 4A Player of the Week honors after scoring 22 points against Roosevelt...selected to the Associated Press 4A All-State First Team...participated in the Northwest Shootout, an annual game featuring Oregon and Washington all-stars, where she played against WSU teammate Kate Benz...finished career third

on GSL's all-time scoring list...McDonald's All-American Nominee.

PERSONAL

Adriane Renee Ferguson...born 5-27-84 at Colville, Wash....parents Bill and Karen... brother Cody and sister Courtney...father played professional football with the NFL's New York Jets (1973-75) and CFL's Winnipeg Blue Bombers...sister plays basketball for UC Irvine...started for the Spokane Stars AAU team during the summer of 2002 and averaged 8.1 points for a squad that compiled a 33-6 record...played for Stars team that finished second at nationals in summer of 2000.

FERGUSON'S WSU CAREER

FRESHMAN (2003-04): Played in 26 games, starting 18...hit double-digits in scoring six times...scored a season-high 15 points vs. Arizona State (Feb. 28)...tallied 13 point games twice (San Diego State, Dec. 22; at USC, Jan. 11)...pulled down a season-high eight rebounds twice (Nebraska, Dec. 4; at USC, Jan. 11)...averaged 5.7 points and 3.3 rebounds a game...averaged 8.8 points in the last five games played...did not play at Oregon schools

FERGUSON'S WSU CAREER HIGHS

MIN:	35 vs. Oregon, 1/17/04
FGM:	6 vs. Arizona State, 2/28/04
FGA:	10 vs. San Diego State, 12/22/03
3FGM:	2 (Twice) vs. Arizona State, 2/28/04
3FGA:	3 vs. San Diego State, 12/22/03
FTM:	8 at USC, 1/11/04
FTA:	10 at USC, 1/11/04
REB:	8 (Twice) at USC, 1/11/04*
ASST:	3 at Wyoming, 11/24/03
BLKS:	3 vs UCLA, 2/7/04
STLS:	3 at Utah, 12/13/03
PTS:	15 vs. Arizona State, 2/28/04

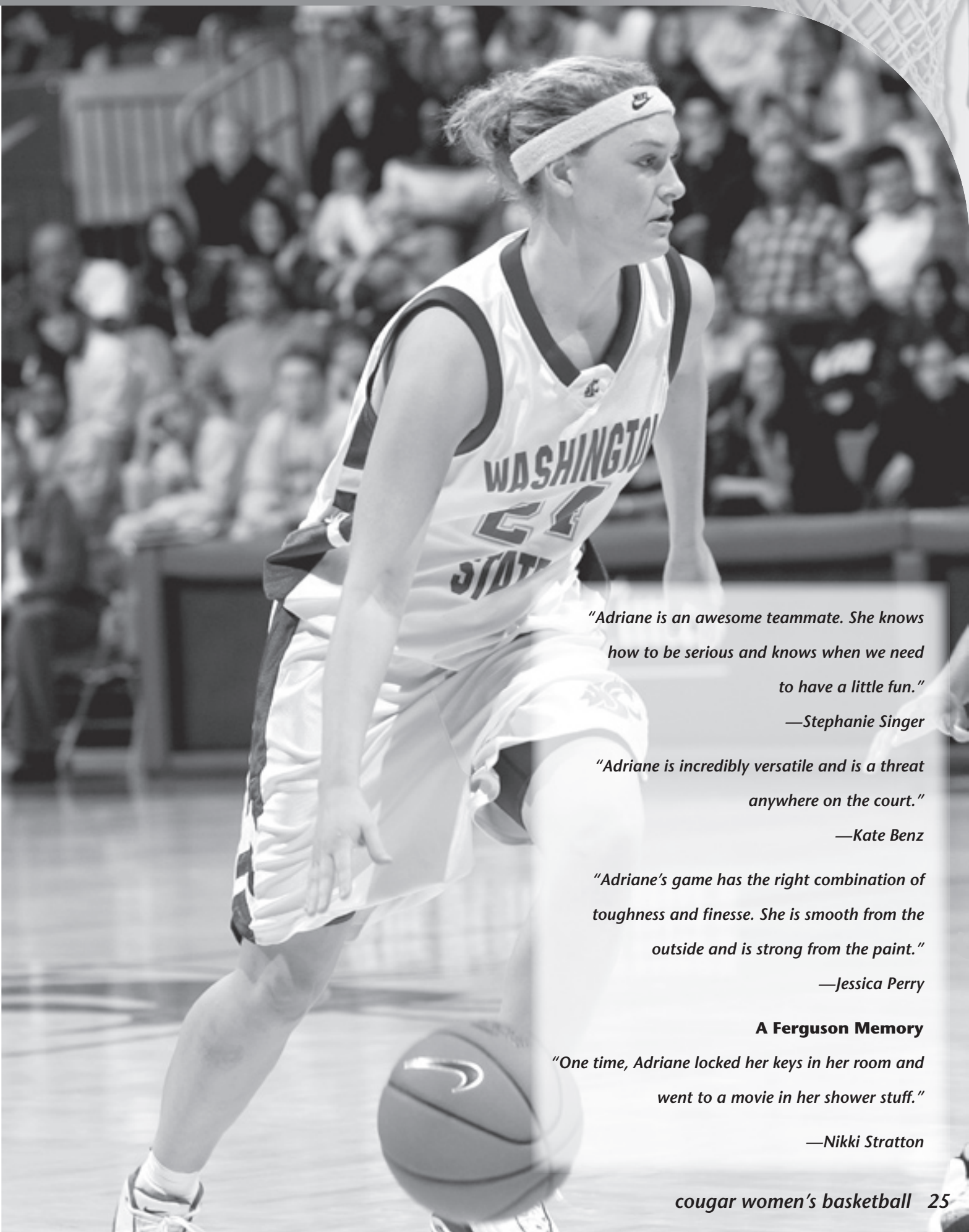
*indicates most recent occurrence



Adriane Ferguson stands by the victory bell in front of the Lewis Alumni Center. In the late 1800's, the bell was mounted on the ground in the center of campus where it rang to start and dismiss classes. Today, a member of the Student Alumni Connection rings it after a WSU football victory.

FERGUSON YEAR BY YEAR

YEAR	GP-GS	PTS-AVG	FGM-FGA	PCT	3-PT FG FGM-FGA	PCT	FTM-FTA	PCT	OR	DR	TR	AVG	PF	A	TO	BS	ST	MIN
2004	26-18	148-5.7	49-136	.360	12-29	.414	38-47	.809	24	63	87	3.3	54	25	53	13	21	574



"Adriane is an awesome teammate. She knows how to be serious and knows when we need to have a little fun."

—Stephanie Singer

"Adriane is incredibly versatile and is a threat anywhere on the court."

—Kate Benz

"Adriane's game has the right combination of toughness and finesse. She is smooth from the outside and is strong from the paint."

—Jessica Perry

A Ferguson Memory

"One time, Adriane locked her keys in her room and went to a movie in her shower stuff."

—Nikki Stratton



10 - STEPHANIE SINGER

Guard

5-7

Sophomore

Eugene, Ore.

(Marist HS)

SINGER'S WSU CAREER

FRESHMAN (2003-04): Played in all 28 games, starting 10 ...averaged 4.8 points a game...averaged 12.7 points over final three games...reached double figures in points seven times including final three games of season...scored a season-high 17 points against Arizona State (Feb. 28)...previous season-high was 12 points at Arizona State (Dec. 27)...turned in 11-point effort against Oregon State at the Pac-10 Tournament (March 5)...flirted with a triple

SINGER'S WSU CAREER HIGHS

MIN:	40 vs. Arizona, 2/26/04
FGM:	6 vs. Arizona State, 2/28/04
FGA:	13 vs. Arizona State, 2/28/04
3FGM:	3 vs. Oregon State, 3/5/04
3FGA:	6 at UCLA, 1/9/04
FTM:	4 (Twice) vs. Arizona State, 2/28/04
FTA:	4 (Twice) vs. USC, 2/5/04*
REB:	8 vs. Arizona, 2/26/04
ASST:	7 vs. Arizona, 2/26/04
BLKS:	1 (Twice) vs. USC, 2/5/04*
STLS:	3 (3 Times) vs. Arizona, 2/26/04*
PTS:	17 vs. Arizona State, 2/28/04

*indicates most recent occurrence

double vs. Arizona (Feb. 26)...tallied 10 points, eight rebounds and seven assists against the Wildcats...rebounds and assists against Arizona were season-highs...led team averaging 2.4 assists a game...second on team with 15 treys.

SINGER'S HIGH SCHOOL CAREER

Played varsity soccer, basketball and softball as a **FRESHMAN** at Churchill High School...received most improved award in all three sports...transferred to Marist High School prior to her **SOPHOMORE** year...played basketball and softball...averaged 9.5 points for basketball team that captured fourth in state...softball team captured Sky-Em League title...started at point guard as a **JUNIOR**...averaged 12 points, six assists and four steals a game...All-Sky-Em League Second Team...member of team that captured league title and finished third at state...set school record for most assists in a game (15)...captured first team all-league and All-State in softball...as a **SENIOR** averaged 15.5 points, nine assists, six steals and three rebounds a game for a team that finished third in state and compiled a 23-4 record...Sky-Em League's Player of the Year...first team All-State and All-Sky-Em League...first team All-Oregon 3A Tournament...captured Eugene Register-Guard's Winter Player of the Year award...set a single-game tournament record with 12 assists against Tillamook in the third place game...selected first team 3A All-State by the Oregonian...first team all-league in softball.

PERSONAL

Stephanie Mae Singer...born 3-18-85...parents Stanley and Diana...brother Nathan...enjoys playing the guitar...plans to pursue a degree in sports management.



Stephanie Singer stands by the completed Indoor Practice Facility. The facility features a full-sized football/soccer field, a six-lane 200m track and an eight-lane 60m sprint track. The climate-controlled facility features an air-supported roof which reaches nearly seven stories high in the center, 131 yards long and 73 yards wide.

SINGER YEAR BY YEAR

YEAR	GP-GS	PTS-AVG	FGM-FGA	PCT	3-PT FG FGM-FGA	PCT	FTM-FTA	PCT	OR	DR	TR	AVG	PF	A	TO	BS	ST	MIN
2004	28-10	133-4.8	48-125	.384	15-40	.375	22-31	.710	14	38	52	1.9	33	66	89	2	23	507



"Stephanie has the best court vision and awareness on our team. She is always getting people open. I swear she can see who is sitting in the bleachers during the game."

—Adriane Ferguson

"Stephanie is deceptively quick and explosive."

—Charmaine Jones

"Stephanie is a team first, self later, type of player."

—Nikki Stratton

A Singer Memory

"I'll never forget watching Stephanie ride through the varsity weight room on her scooter!"

—Kate Benz



5 - NIKKI STRATTON

Guard

5-11

Sophomore

Colorado Springs, Colo.

(Coronado HS)

STRATTON'S WSU CAREER

Will be redshirting for medical reasons in 2004-05.

FRESHMAN (2003-04): Saw action in 23 games...started the final six games of the season...averaged 3.0 points a contest...averaged 7.5 points in final four games...scored a season-high 11 points against UW (Feb. 21)...made first start as a Cougar at Oregon (Feb. 12) where she recorded 10 points...also

STRATTON'S WSU CAREER HIGHS

MIN: 32 vs. Arizona, 2/26/04
FGM: 3 (3 Times) vs. Arizona State, 2/28/04*
FGA: 10 at Oregon, 2/12/04
3FGM: 2 (3 Times) vs. Arizona, 2/26/04*
3FGA: 5 (3 Times) vs. Arizona, 2/26/04*
FTM: 4 (Twice) at Oregon 2/12/04*
FTA: 6 (Twice) vs. UW, 2/21/04*
REB: 2 (3 Times) vs. Oregon State, 3/5/04*
ASST: 5 at Oregon 2/12/04*
BLKS: none
STLS: 2 (Twice) vs. Arizona State, 2/28/04*
PTS: 11 vs. UW, 2/21/04

*indicates most recent occurrence

STRATTON'S HIGH SCHOOL CAREER

Four year letterwinner in basketball at Coronado High School...earned All-State academic as a **FRESHMAN**...All-Metro League honor-

able mention as a **SOPHOMORE**...led Coronado in points (14 per game), assists (six per game) and steals (five per game) as a **JUNIOR**...second team all-league and All-State honorable mention selection...as a **SENIOR** averaged 16 points, 6.1 assists and 5.5 steals a game...finished season ranked first in the state in assists, third in steals and 20th in scoring...team captain...named team MVP...first team all-district, and first team All-Colorado selection.

PERSONAL

Nicole Kathleen Stratton...born 1-6-85 at Colorado Springs, Colo....parents Randy and Kathy...sister Jes-

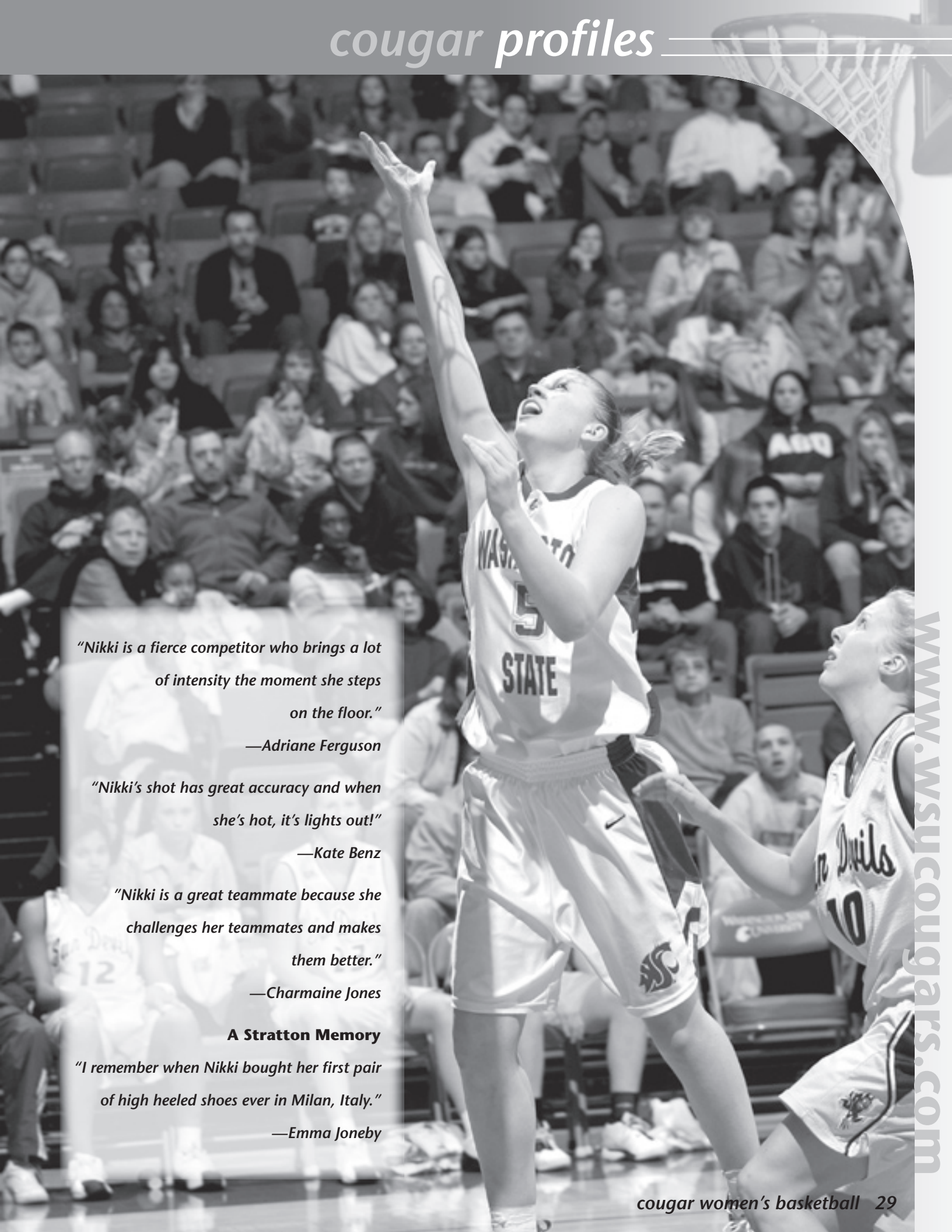
sika...father played semi-pro basketball in Australia and participated in an NBA try out...sister plays basketball for Baylor University...named to the Coronado Hall of Fame...Champions nominee by the Rotary Club...served as a torch-bearer for the Winter Olympics flame's journey to Salt Lake City in 2002...interested in veterinary science.



Nikki Stratton poses at Martin Stadium (cap. 37,600) home to the Cougar football team. During the summer of 2000, FieldTurf, the closest artificial playing surface to grass, was installed at the stadium making WSU the second NCAA Division I school to do so. The Cougar football team has strung together three consecutive 10-win seasons and defeated No. 5 Texas in the 2003 Holiday Bowl.

STRATTON YEAR BY YEAR

YEAR	GP-GS	PTS-AVG	FGM-FGA	PCT	3-PT FG			FTM-FTA	PCT	OR	DR	TR	AVG	PF	A	TO	BS	ST	MIN
					FGM-FGA	PCT	PCT												
2004	23-6	68-3.0	20-68	.294	13-45	.289	15-22	.682	2	13	15	0.7	28	17	27	0	13	286	



"Nikki is a fierce competitor who brings a lot of intensity the moment she steps on the floor."

—Adriane Ferguson

"Nikki's shot has great accuracy and when she's hot, it's lights out!"

—Kate Benz

"Nikki is a great teammate because she challenges her teammates and makes them better."

—Charmaine Jones

A Stratton Memory

"I remember when Nikki bought her first pair of high heeled shoes ever in Milan, Italy."

—Emma Joneby



11 - CRYSTAL BLUE

Guard

5-10

Junior

Seattle, Wash.

(Franklin HS/Odessa College)

BLUE'S JUNIOR COLLEGE CAREER

SOPHOMORE (2002-03): Averaged 13.4 points, 5.4 rebounds and 2.0 assists at Odessa College for coach Timi Brown...shot 45 percent from the field including 37 percent from three-point territory...earned a first team All-Western Junior Athletic Conference selection...named outstanding sophomore of the year.

FRESHMAN (2001-02): Earned an All-Western Junior Athletic Conference honorable mention honor...named outstanding freshman of the year.

BLUE'S HIGH SCHOOL CAREER

Four-year letterwinner at Franklin High School for coach Tanya Washington...earned team MVP honors as a **JUNIOR**...was an All-Kingco League First Team selection as a **SENIOR**...captain of team...earned team MVP honors...participated in the Emerald City All-Star Game.

PERSONAL

Crystal Blue...born 8-18-83 at Augusta, Ga...parents James and Juanita ...brother Candino...enjoys reading and watching movies...plans to pursue a degree in communication.

Murrell on Blue

"Crystal's defensive tenacity should be very effective against the challenging guards we face in the Pac-10. Her ability to penetrate with the ball will make her a contributor at both ends of the floor."

Blue's mother Juanita

"I love the college town atmosphere in Pullman. With her so close to home, I'm excited about getting to see her play."



Cougar Authentics

Blue on WSU

"With such a great communication's program, WSU was an easy choice for me. The campus here is beautiful and very easy to get around. The coaches preparation for both games and practices is very impressive."

Crystal Blue shops for Cougar gear at the "Bookie". The Student Book Corporation has been student owned since 1914. Text books, school supplies and an extensive collection of Cougar apparel combine with a convenience store, espresso bar and a variety of services to make it one of the busiest spots on campus.



41 - KEISHA MOORE

Center

6-2

Junior

Riverside, Calif.

(J.W. North HS/Idaho)

MOORE'S COLLEGIATE CAREER

SOPHOMORE (2002-03): Played in all 28 games, starting 25, at the University of Idaho...averaged 12.2 points and 8.2 rebounds a game...earned an All-Big West Conference Honorable Mention selection...ranked third in the Big West in rebounds and blocked shots (1.3/game)...grabbed 83 offensive rebounds, which was fifth best in the conference...averaged 28.1 minutes a game...shot 42 percent from the field.

FRESHMAN (2001-02): Played in all 28 games, starting 24...averaged 12.5 points and 6.6 rebounds a game...earned a spot on the Big West Conference All-Freshman Team...ranked in the top 10 in the conference in four categories: total rebounds, defensive rebounds, field goal percentage and blocked shots...third in the conference in blocks (1.6/game)...ended season 12th in the conference in scoring...reached double figures in scoring 18 times and double-digits in rebounds in three games...tallied three double-doubles...eclipsed the 20-point mark on three occasions...began conference season with a season-highs in points (25) and rebounds (12) against Cal Poly (Jan. 5)...that began a run of six consecutive games scoring in double-digits...scored 10, 16, 24, 12 and 23 points in her next five games.

MOORE'S HIGH SCHOOL CAREER

Four year letterwinner in basketball at J.W. North High School...as a **JUNIOR** was captain of team that captured California State championship in the 1999-2000 season...was a California Interscholastic Federation second team All-State pick...averaged 14 points and seven rebounds a game...selected second team all-league as a **SENIOR**.

PERSONAL

Keisha Moore...born 1-1-83 at Orange County, Calif...parents Gerald and Sherla...sister Shavon...pursuing a degree in social sciences.

Murrell on Moore

"Keisha is an exciting player who will provide an immediate impact from the time she puts on a Cougar uniform. The combination of size, athleticism and strength she has will give us a new dimension in our post game. We're looking forward to helping her realize her potential and becoming an instrumental part of Cougar Basketball this season."

Moore's mother Sherla

"My daughter is very happy at WSU and is very focused on her academics."

Moore's father Gerald

"WSU has an outstanding athletic program and the Pac-10 is a very strong conference. It's an exciting challenge and opportunity for my daughter."



MOORE YEAR BY YEAR - IDAHO

YEAR	GP-GS	PTS-AVG	FGM-FGA	PCT	3-PT FG FGM-FGA	PCT	FTM-FTA	PCT	TR	AVG	A	BS	ST	MIN
2002	28-24	350-12.5	133-294	.452	0-1	.000	84-138	.609	185	6.6	29	46	29	791
2003	28-25	342-12.2	113-283	.399	0-0	.000	116-168	.690	231	8.2	26	37	42	787
Career	56-49	692-12.4	246-577	.426	0-1	.000	2000-306	.654	416	7.4	55	83	71	1,578

Moore on WSU

"I chose Washington State because I saw how well each player connected with each other. I also felt this was a program I could be successful in. I love the campus because it is diverse and it has great facilities for the student-athletes. I like coach Murrell because just to watch her coach, she puts everything out there. She cares about our success on and off the court."

Keisha Moore sits outside the WSU Student Recreation Center. Named one of the top 10 facilities in the nation by Athletic Business magazine, the SRC encompasses 150,000 square feet, which contains seven gymnasiums, a four-lane indoor track, the nation's largest free weight and cardio fitness training area in a student recreation center (17,000 square feet), five-lane lap pool, leisure spa, three multi-purpose rooms, four racquetball courts, a wellness center, a juice bar and fireplace lounge.



4 - ARIANA SCALES

Guard

5-8

Junior

Topeka, Kan.

(Cowley County CC/Topeka West)

Murrell on Scales

"As one of the top players out of the one of the nation's toughest junior college conferences, Ana has successfully shown her ability to play at the highest level. She can be a prolific scorer as a shooter and on the drive. Her ability to create scoring opportunities for herself and her teammates is going to keep defenses on their toes."

SCALES' JUNIOR COLLEGE CAREER

SOPHOMORE (2003-04): Playing for coach Stephanie Smith at Cowley County CC, averaged 20.5 points, 3.1 rebounds and 2.7 assists a game for a team that went 23-9 ...earned a second team All-Region VI selection and an All-Jayhawk Conference First Team accolade...set school records for points in a game (42), field goals made in a game (17), field goals made in a season (255), three-point baskets made in a season (75), and points in a season (654).

FRESHMAN (2002-03): At Jefferson College in Missouri earned all-league first team selection...ranked 21st in the nation in scoring in junior college... averaged 20 points, six assists, five steals and four rebounds a game.

SCALES' HIGH SCHOOL CAREER

Four-year letterwinner at Topeka West... member of team that won State championship as a **SOPHOMORE**...earned All-State, all-league, all-5A classification and all-city honors as a **JUNIOR**...won 5A State championship in soccer...earned all-city, all-region and All-State in soccer...as a **SENIOR** earned All-State, all-league, all-5A classification and all-city honors...led team to State tournament...shares school record for single-game scoring performance with 42 points...school's career scoring leader (1,398 points)...MVP of Wichita All-State Tournament...McDonald's All-American candidate.

PERSONAL

Ariana Kearen Scales...born 4-7-84 at Topeka, Kan...parents Charles and Utika...brothers Ryan and Charles Jr...sister Shabree...was third at nationals in 1997 in 800 meters clocking a time of 2:24...ran a 400 meter time of 59:46 at the age of 13...pursuing a degree in sports management.

Scales' parents Charles and Uhika

"It will be a major change with Ariana so far away, but we know that she'll be able to excel on and off the court."



Scales on WSU

"I like the campus because it's right in the middle of it all. It's big, beautiful and it's easy to get involved with activities. Coach Murrell is a cool person who keeps it real with you. She told me one day that 'What you see is what you get' and I really like that about her. I think the coaching staff is great. They made me feel welcomed not just as a player but as a person."

WSU VETERANS MEMORIAL

IN HONOR OF THOSE WHO SERVED.
THE COMPLETION OF THIS MEMORIAL
IS THE GIFT OF THE CLASS OF
NINETEEN HUNDRED AND FORTY-NINE

Ariana Scales stands in the WSU Veteran's Memorial, which honors military veteran alumni, faculty and staff who have made the ultimate sacrifice. Behind her is the new addition for the Murrow School of Communication. The 12.7 million dollar project opened in spring of 2004. ABC's Keith Jackson and Barry Serafin as well as the school's namesake, Edward R. Murrow, are just few of the notable graduates from WSU in broadcasting and communication.



1 - JORDAN MCCORMICK

Guard

5-10

Freshman

El Cerrito, Calif.

(El Cerrito HS)

MCCORMICK'S HIGH SCHOOL CAREER

Named Alameda/Contra Costa Athletic League rookie of the year as a **FRESHMAN**...honorable mention all-league selection...averaged 12.3 points, 5.6 rebounds and 2.6 assists a game for a team that compiled a 20-9 record...did not play as a **SOPHOMORE**...as a **JUNIOR** averaged 16.7 points, 6.1 rebounds and 3.2 assists a game...second leading scorer in league...named first team all-league...named most valuable player at the West Coast Jamboree Tournament...as a **SENIOR** averaged 12.1 points and 5.2 rebounds a game for a El Cerrito team that went 22-9...second leading scorer in the Alameda/Contra Costa Athletic League...all-league first team selection...McDonald's All-American nominee...named to the West Coast Jamboree All-Tournament team.

PERSONAL

Jordan McCormick...born 9-12-86 at Oakland, Calif...parents Lee and Tonja...brother Joshua...participated in two senior all-star games in the Northern California region...enjoys writing poetry.

Murrell on McCormick

"Jordan is a player who, despite her high school success, has only begun to scratch the surface of what she can accomplish. She has all of the tools to be an outstanding player and, as she learns the ropes of the college game, she's only going to get better and better.

Her combination of skills and athleticism should allow her to be as successful as she wants to be."

McCormick's parents

Lee and Tonja

"We feel comfortable with our daughter at WSU because she'll be able to focus on her studying and playing basketball. This is going to be a great experience for her over the next four years."



"The combination of college and basketball can be a very stressful experience. To have a coaching staff that is supportive and understanding makes the transition from high school to college a lot easier. In my family, academics come first but lucky for me WSU excels in both. On the way home after visiting WSU for the first time, my parents both told me that they thought WSU was the school for me."

Jordan McCormick poses at the statue entitled "The Caring Call" in front of the Bustad Veterinary Sciences Building, part of the WSU College of Veterinary Medicine, one of the most renowned veterinary schools in the world. The WSU College of Veterinary Medicine is equipped with modern animal care and holding facilities. In addition, the College features a Veterinary Teaching Hospital, regarded as one of the best in the nation.

[illegible]

THE CARING CALL

100th Anniversary

1890-1990

The American Association of Veterinary Clinicians
Honoring the Dedication of Veterinary Medicine and
Medical Care of Man

VETERINARY MEDICAL ASSOCIATION STATUE COMMITTEE

Dr. Edward F. Hinkle, Chairman

Dr. John Cannon
Dr. Richard Reid
Dr. Warren Holliman
Dr. Thomas L. Gordon

[illegible]



22 - DANI MONTGOMERY

Guard
5-11
Freshman
Medford, Ore.
(Crater HS)

MONTGOMERY'S HIGH SCHOOL CAREER

Played for coach Scott Dipple at Crater High School...lettered in basketball as a **FRESHMAN**... as a **SOPHOMORE** at Bend High named Oregon Trail All-Defensive Player... named first team SOC as a **JUNIOR**...set school mark in 3-point percentage...named all-tournament selection at the Sierra Shootout...set team bests in total rebounds, offensive rebounds and most offensive boards in a game...also selected SOC third team in volleyball and track...named second team All-State as a **SENIOR**...led Crater to the Southern Oregon Conference (SOC) championship and was named the league's player of the year... averaged 14.3 points, 10.3 rebounds, 3.2 assists and 2.1 steals for the Comets, who won the SOC with a 13-1 record and a 19-7 overall mark...posted the first triple-double in school history -- and the first in 22 years in Oregon 4A competition -- Feb. 10 against North Medford recording 13 points, 11 boards and 10 assists...was a 2004 McDonald's All-American nominee...participated in the Northwest Shootout, an annual game featuring Oregon and Washington all-stars.

PERSONAL

Danielle Leigh Montgomery...born 12-19-85 at San Dimas, Calif...parents Dale and Tosha... sister Dasha...enjoys dancing and watching movies.

Murrell on Montgomery

"Dani has that one quality that every coach loves, she's effective.

No matter what is asked of her, she gets it done. When you combine that with her relentless work ethic, there's going to be a lot of success.

Her ability to play a power game on the perimeter will add a physical presence to our backcourt."

Montgomery's parents

Dale and Tosha

"We are very happy Dani will be playing ball for WSU. The fit is perfect. She will have a great college experience under coach Murrell and her staff. They work as a great team and share the message with the players. The Washington State coaching staff has great chemistry! They know how to keep athletes motivated on and off the court with their positive attitude. We think it is a great fit for Dani and we are excited she will be a Cougar."



Montgomery on WSU

"I loved everything the college had to offer me academically as well as athletically. I knew I could grow to be stronger under coach Murrell and her staff.

The WSU campus is absolutely gorgeous. It's one of the main reasons I chose the university. You can't find this campus feeling anywhere else! Coach Murrell is an absolutely amazing coach. She has that personality that makes you always want to strive to be your best in everything you do."

Dani Montgomery poses by one of the many artistic sculptures situated throughout the WSU campus. Art plays a prominent role in campus life as the university offers degrees in fine art with specialization in art history, ceramics, digital media, painting and drawing, photography and sculpture. In addition, the Museum of Art at WSU offers a wide variety of changing exhibitions of regional, national and international art and artists, as well as educational programs featuring lectures, a brown-bag lecture series, community workshops, and guided tours of the exhibitions.

